

• Lakeview Elementary • Weekly News



November 10th, 2023

Good afternoon Lakeview families.

No school Monday November 13th –
Remembrance Day Holiday

Remembrance Day Assembly

Thank-you to all the family members who joined us today for our Remembrance Day Assembly. It was a very touching and thoughtful assembly. Daniel and Eesha were great MC's and the presentation of Flanders Fields by Division 4, The Peace is presented by Division 6 and the Heal the World song preformed by our choir all made us reflect on the importance of peace and remembering those who have given the ultimate sacrifice. The presentation of the wreaths by each division and the leadership group wrapped up a very smooth and thoughtful assembly. Thank-you to all the students and audience members for being so respectful.

Dates to Note:

- Nov 10 - Remembrance Day Assembly 10:45
- Nov 13 Remembrance Day holiday
- Nov 17 Fancy Day
- Nov 23 - Young Peoples Concert grade 4-7 @10:45
- Nov 24 Pro - D day
- Nov 30 November Assembly
- Dec 8 Report Cards Home
- Dec 12 Choir to Loughheed
- Dec 21 Pancake Breakfast - with PJ's and Stuffee
- Dec 22 Winter Break begins
- Jan 8 First day back

...To you from failing hands we throw The
torch, be yours to hold it high. If ye break faith
with us who die We shall not sleep, though
poppies grow In Flanders fields.

From "In Flanders Fields" by John McCrae



11 NOVEMBER
REMEMBRANCE DAY

Lest we forget

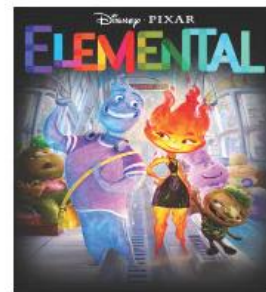


Parking and Drop-off reminders:

As anyone who drives to Lakeview knows parking and drop-off is tight around the school. Mayfield street is a tight, dead-end street and we are now also seeing parking difficulties below the lower playground at Berkley street.

Some reminders of rules to help with drop-off and pick-up:

- The drop-off area at the front of the school is only a drop-off and keep going area. You are not allowed to park in the turn around area and you may not get out of your car in this area. It is drop and go.
- The school parking lot is for Burnaby Staff only. No parking or pulling through the parking lot.
- Please do not stop in front of residence drive ways. They need access in and out and we have even seen someone park in front of a driveway
- If you can walk instead of driving please do so. In our catchment area about 80% of the students live within a 10 minute walk. Please walk instead of driving .



Friday, November 17th
Gym Doors Open at 6:00 pm
Show starts at 6:30 pm

Admission per family: \$5 in advance on Munch a Lunch
until capacity is reached

Purchase your tickets on Munch-a-Lunch in Fundraiser Tab by **4:00pm**
Friday November 17th to guarantee entrance (NO tickets will be given - your child's name will be on a list at the door)

Bring your blankets, pillows, chair or sleeping bag for the show

All children must be accompanied by an adult

Cash concession will be available offering popcorn, drinks and candy

All proceeds from concession and ticket sales go to the Lakeview PAC. Thank you for your support

JOIN US FOR FAMILY FUN!

EDMONDS FESTIVAL OF LIGHTS

Saturday, November 25, 2023
2:30-5:30 pm
Edmonds Community Centre
7433 Edmonds Street

Santa will be there!

One lucky child will help the Mayor light the Big Tree at 5:15 pm!

Come watch as we light up the huge tree, and enjoy festive music, hot chocolate and holiday crafts with your family.



STAR SPONSORS



TREE SPONSORS



CROMPTON
BROTHERS AUTOMOTIVE

FAIRHALL ZHANG
& ASSOCIATES, CPA

RAJ CHOUHAN, MLA
BURNABY-EDMONDS

LIGHT SPONSORS



PETER JULIAN, MP
NEW WESTMINSTER-BURNABY

JAGMEET SINGH, MP
BURNABY SOUTH

CANDY CANE SPONSORS



JIM & LINDY
MCQUEEN

LARRY HAYES

LHY THAI
RESTAURANT

